

# Bourdon Tube Pressure Gauges

for Clean Dry Air Applications  
Stainless Steel Series

Nominal Size 40, 50, 63 mm • Model 131.12

## Pressure Gauges

### Service intended

Suitable for gaseous, liquid and corrosive media, also in a corrosive environment, **for demanding high purity applications.**

Suitable for CDA (Clean Dry Air) applications.

Fields of application are especially the semiconductor and electronic industry, medical industry, gene technology, biotechnology and pharmaceutical industry.

### Design

Safety pattern gauge to EN 562 / ISO 5171,

leak proof, leak rate  $\leq 10^{-8}$  mbar • l/s

pressure connection NPT thread (standard) resp. original

VCR® Fitting with front sealing pressure connection

### Nominal size

40, 50, 63 mm

### Accuracy

2/1/2% of span (ASME B 40.1 Grade A) in compliance with accuracy class 1.6 per EN 837-1 /6

### Scale ranges (EN 837-1 /5)

0 ... 1 to 0 ... 400 bar (0 ... 15 to 0 ... 6000 psi)

or other equivalent units of pressure or vacuum

### Working pressure

Steady:  $\frac{3}{4}$  x of full scale value

Fluctuating:  $\frac{2}{3}$  x of full scale value

Short time: full scale value

### Operating temperature

Ambient: -40 ... +60 °C

Medium: +100 °C maximum

### Temperature effect

When temperature of the pressure element deviates from reference temperature (+20 °C):

max.  $\pm 0.4 \%$  / 10 K of true scale value

### Pressure connection

Material: stainless steel 316 L (1.4404),

lower mount (LM) or centre back mount (CBM),

surface finish  $R_a \leq 0,6 \mu\text{m}$

- $\frac{1}{4}$  NPT - male thread (standard)
- VCR® compatible face seal fittings:  
with union nut (female)  
with male nut
- Fixed body 9/16-18 UNF

### Pressure element

Material: stainless steel 316 L (1.4404),

< 100 bar: C-type

$\geq 100$  bar: helical type

### Movement

Stainless steel



Model 131.12

- VCR® - male nut

### Dial

White aluminium, with pointer stop pin

With black/red lettering, dual pressure scale (psi/bar), inscription "use no oil" or equivalent to prohibition symbol

### Pointer

Black aluminium pointer

### Case

Stainless steel

### Window

Polycarbonate, snap-fit window

### Cleaning

Cleaned for oxygen service to ASME B 40.1 (Level I)

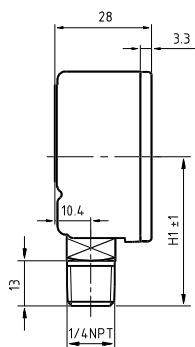
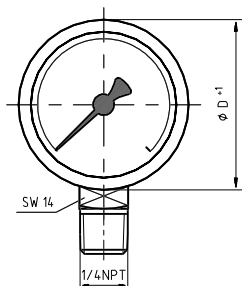
### Optional extras

- Better finish for wetted parts  
(pressure connection)  $R_a \leq 0.3 \mu\text{m}$
- Case stainless steel, electropolished
- Alarm contacts (50 mm)  
Sliding contact (**Model 811**)  
Inductive contact (**Model 831**)

## Dimensions [mm]

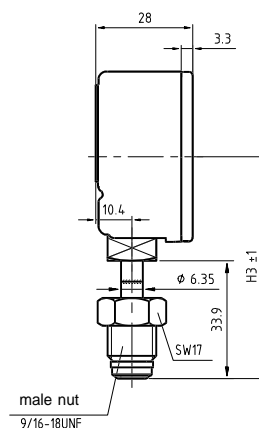
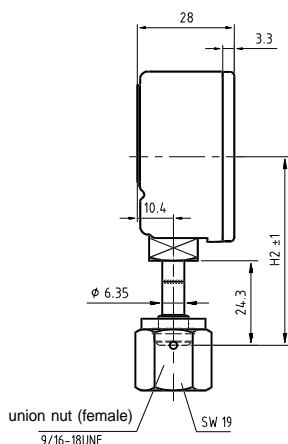
### Radial bottom pressure entry (LM)

1/4 " NPT male

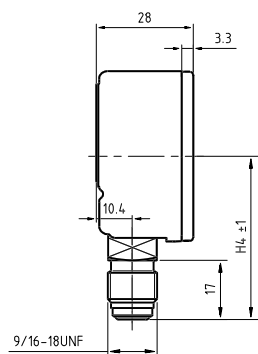


VCR ® union nut (female) SS-4-VCR-1

VCR ® male nut SS-4-VCR-4



Fixed body 9/16-18 UNF



2411 258.01

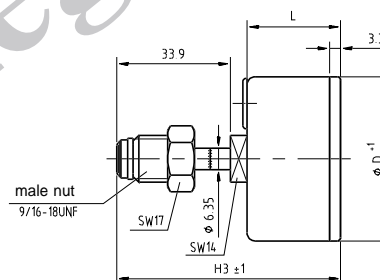
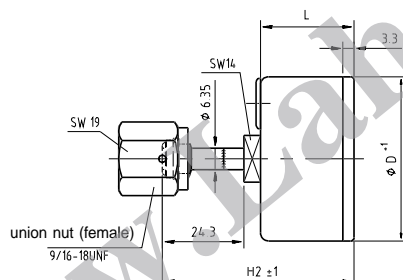
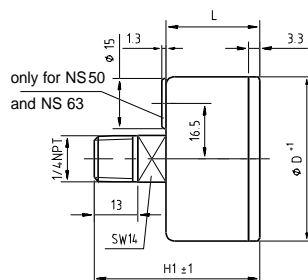
Nominal size	Dimensions [mm]				
	D	H1	H2	H3	H4
50	49	43	54	64	47
63	62	54	57	67	58

### Centre back pressure entry (CBM)

1/4 " NPT male

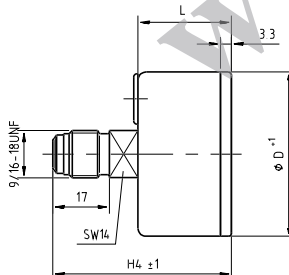
VCR ® union nut (female) SS-4-VCR-1

VCR ® male nut SS-4-VCR-4



2411 266.01

Fixed body 9/16-18 UNF



Nominal size	Dimensions [mm]					
	D	H1	H2	H3	H4	L
40	39	46	57	67	50	27
50	49	49	57	67	53	28
63	62	49	57	67	53	28

## Ordering information

State:

Pressure gauge model / Nominal size / Scale range / Size and location of connection / Optional extras required

Specifications and dimensions given in this leaflet represent the state of engineering at the time of printing. Modifications may take place and materials specified may be replaced by others without prior notice.



**WIKA Alexander Wiegand GmbH & Co. KG**  
 Alexander-Wiegand-Straße · 63911 Klingenberg  
 Tel.: (0 93 72) 132-0 · Fax: (0 93 72) 132-406  
 http://www.wika.de · E-mail: info@wika.de